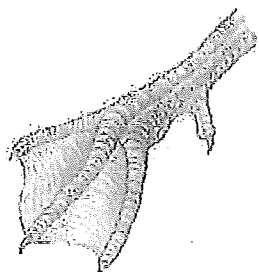
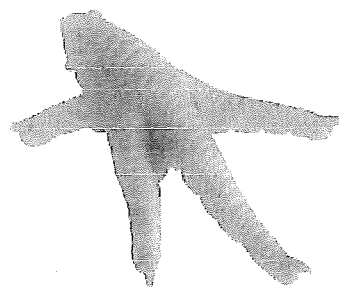


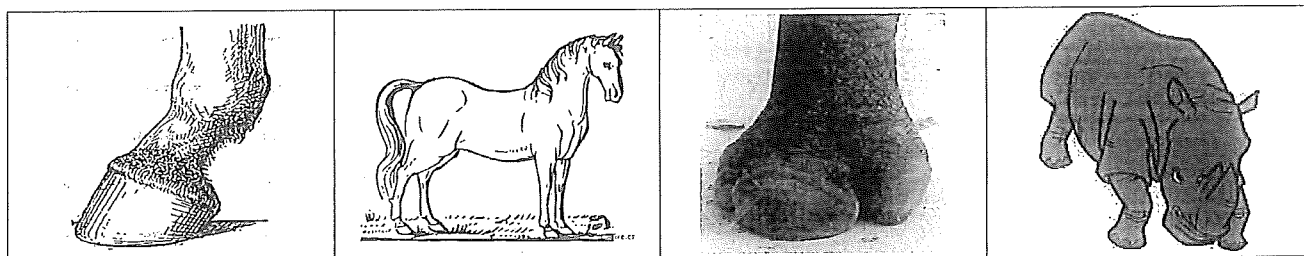
ODLIŠNOSTI ČÁSTI TĚL ŽIVOČICHŮ

NOHY A KONČETINY

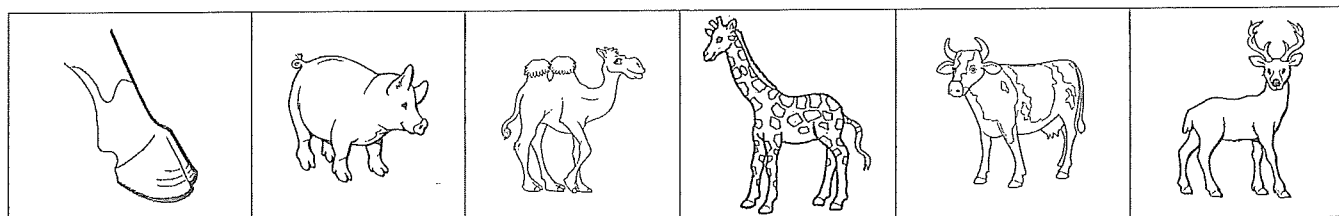




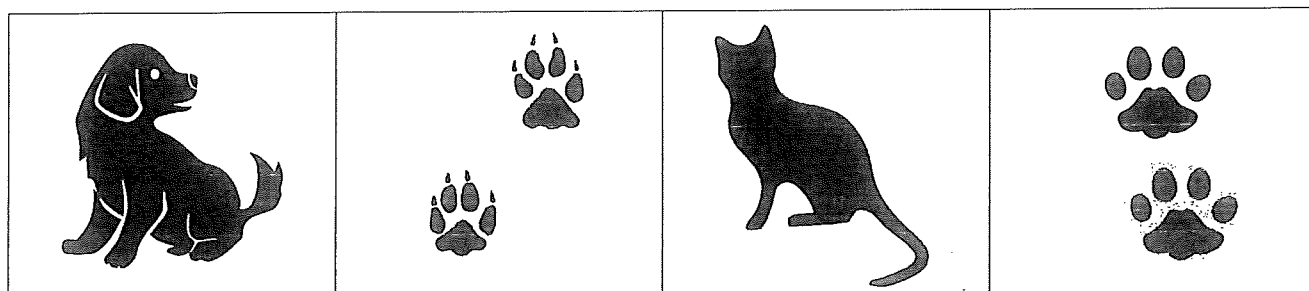
LICHOKOPYTNÍCI: _____



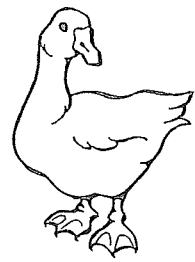
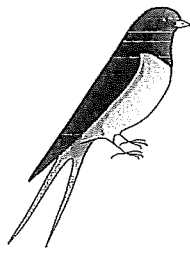
SUDOKOPYTNÍCI: _____



Pes nemůže drápy _____ . Kočce drápy slouží k _____ .

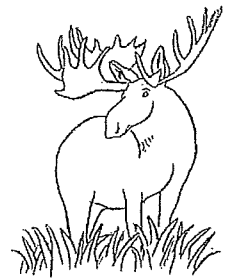
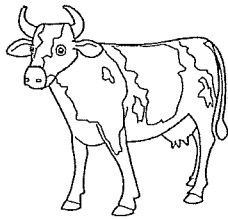
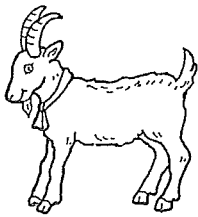


ZOBÁKY PTÁKŮ



ROHY NEBO PAROHY

Rohy jsou _____, parohy NE.



ROHY - PAROHY

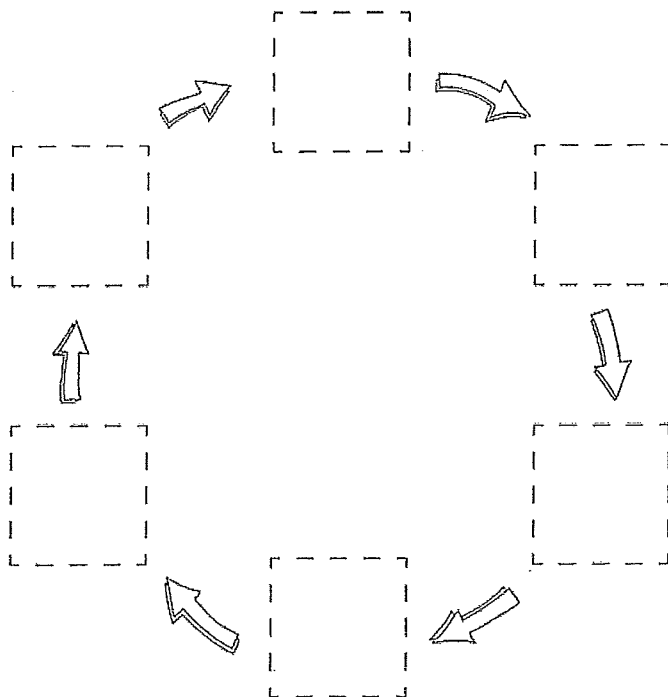
ROHY - PAROHY







ROHY - PAROHY

ROHY - PAROHY

ŽIVOTNÍ CYKLUS ŽÁBY

DŮ: NAKRESLI ŽÁBU



 žabka	 dospělá žába	 pulec	 mláďa žába	 vajíčka	 pulec s nohama
--	--	--	--	---	--

BEZOBRATLÍ

Nemají _____ složenou z kostí.

Mezi bezobratlé patří _____.

Všechny druhy hmyzu mají _____ nohou.

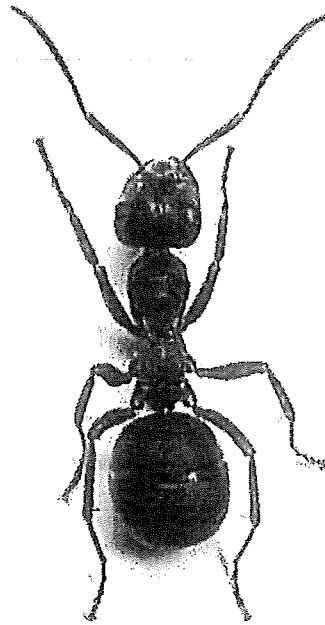
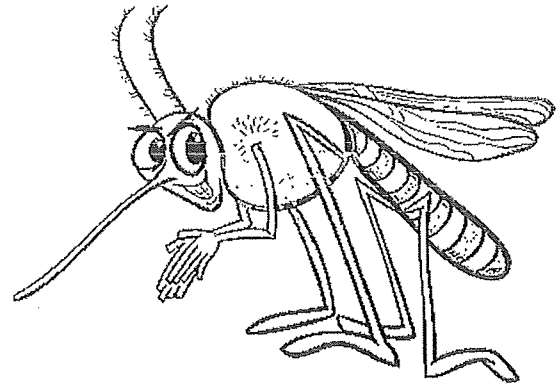
Hmyz dýchá _____.

Mezi hmyz patří např. : _____, _____, _____,

_____ , _____, _____, _____,

_____ , _____, _____, _____,

_____ , _____.



Hmyz může být užitečný: _____

Hmyz nám také život znepříjemňuje. (správně spoj, co k sobě patří)

mouchy způsobují škody na úrodě

sarančata živí se krví zvířat a lidí

blechy, vši přenášejí choroby

